

# LOFT

## Installation Instructions for LOFT in T-Grid

PLEASE READ ALL INSTRUCTIONS CAREFULLY BEFORE INSTALLING. RISK OF FIRE AND ELECTRICAL SHOCK. FIXTURE MUST BE INSTALLED BY A QUALIFIED ELECTRICIAN. ALL INSTALLS SHOULD BE IN ACCORDANCE WITH NATIONAL, LOCAL BUILDING AND ELECTRICAL CODES. ALL WIRES AND MATERIALS USED FOR INPUT/OUTPUT MUST BE UL APPROVED.

### Fixture Dimensions

Product	Dimensions
LOFT	2x2, 2x4, 1x4

Provided Hardware:  
Fixture  
Seismic Clips  
Safety Wire

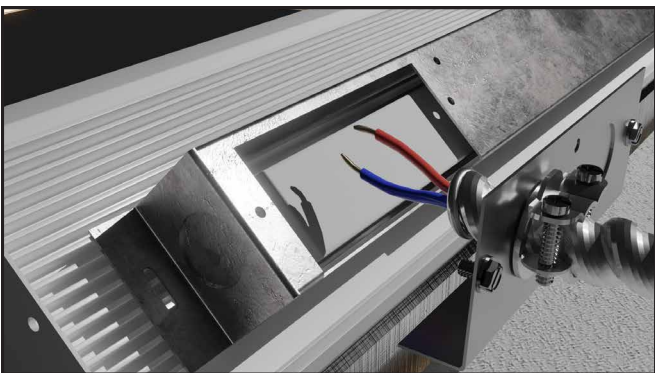
### Fixture Installation Steps for T-Grid:



**1** Remove existing ceiling tile (if tile is currently installed).



**2** Drop the Loft fixture into the T Grid in correct orientation.



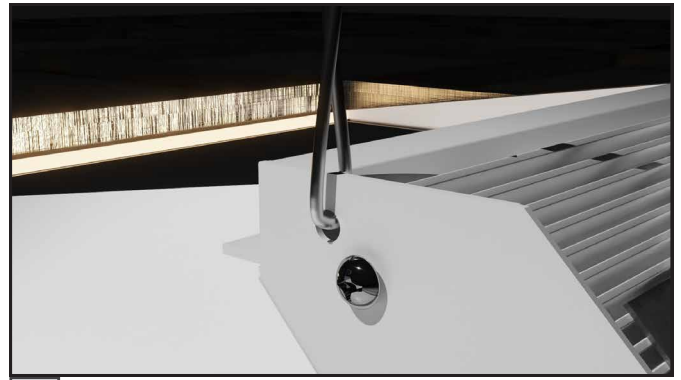
**3** Attach external power wires to Driver in Driver Housing.



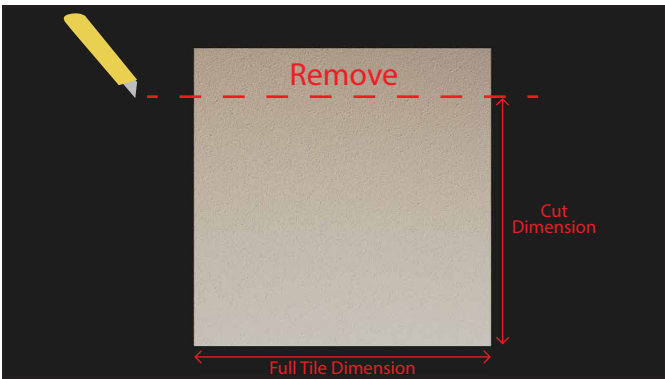
**4** Attach Driver housing cover plate to driver housing.



5 Install Seismic clips to left and right T Grid if needed.



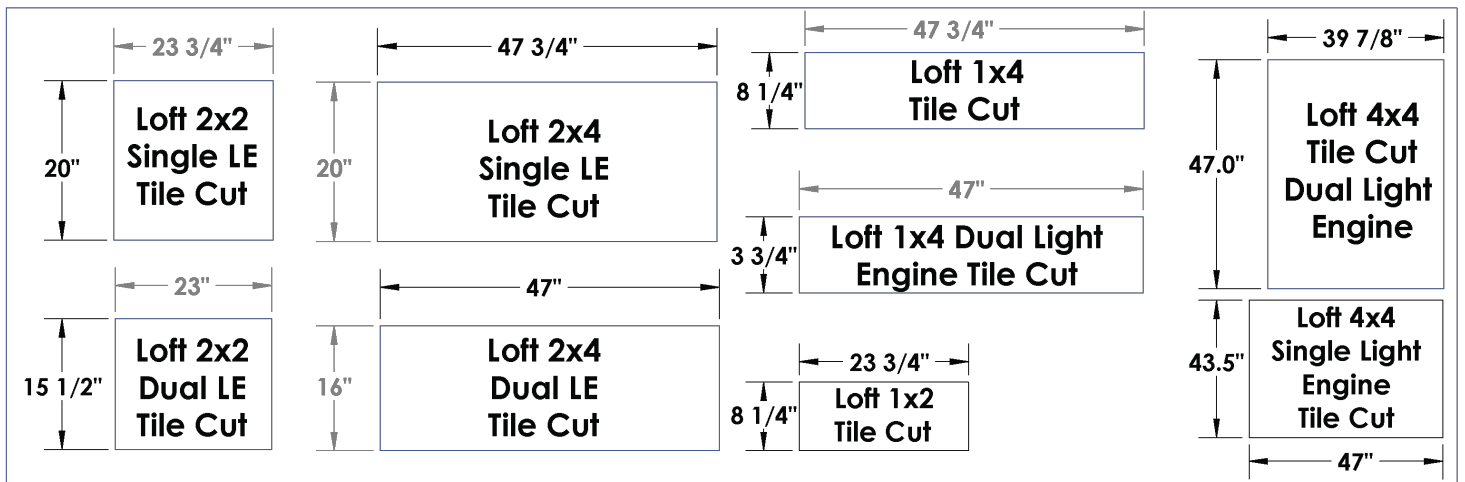
6 Attach safety wire to Loft fixture and structure if needed.



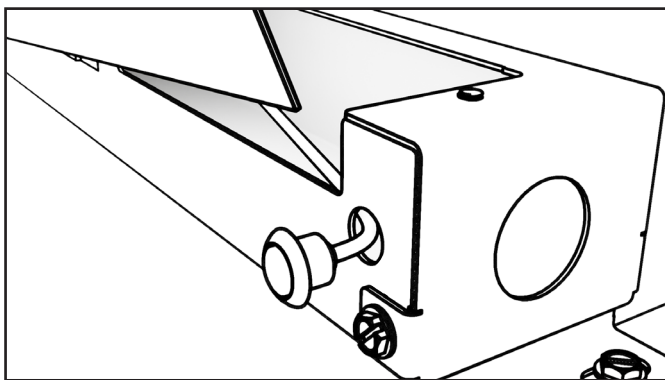
7 Cut ceiling tile to (Tegular/Flat) demsions listed below:



8 Place the ceiling tile on the top of the fixture to complete installation.

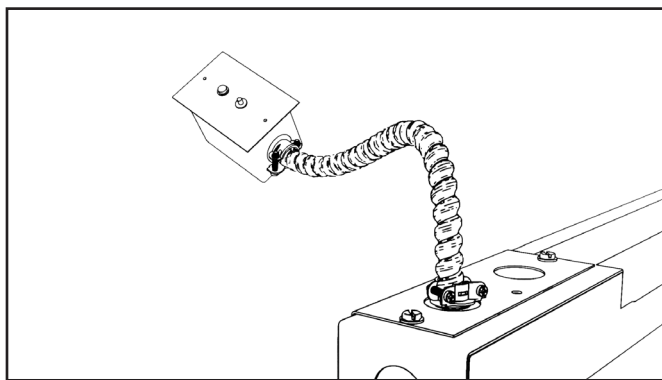


### Non-Plenum Rated EM Test Button:



Install EM test button through side hole in driver box housing and secure using the included nut. Make necessary connections to driver.  
See provided wiring diagram on manufacturer's EM installation instructions.

### Plenum Rated EM Test Button:



Install EM box using included plenum rated wire housing and connect to driver box housing through a knock out hole. Make necessary connections to driver.  
See provided wiring diagram on manufacturer's EM installation instructions.