

# LOFT

## Installation Instructions for LOFT in T-Grid

PLEASE READ ALL INSTRUCTIONS CAREFULLY BEFORE INSTALLING. RISK OF FIRE AND ELECTRICAL SHOCK. FIXTURE MUST BE INSTALLED BY A QUALIFIED ELECTRICIAN. ALL INSTALLS SHOULD BE IN ACCORDANCE WITH NATIONAL, LOCAL BUILDING AND ELECTRICAL CODES. ALL WIRES AND MATERIALS USED FOR INPUT/OUTPUT MUST BE UL APPROVED.

### Fixture Dimensions

Product	Dimensions
LOFT Single and Double Light Engine	2x2, 2x4, 1x4

Provided Hardware:  
Fixture  
Seismic Clips  
Safety Wire

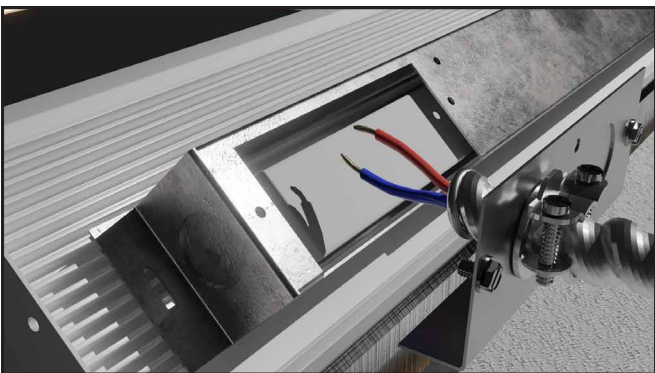
### Fixture Installation Steps for T-Grid:



**1** Remove existing ceiling tile (if tile is currently installed).



**2** Drop the Loft fixture into the T Grid in correct orientation.



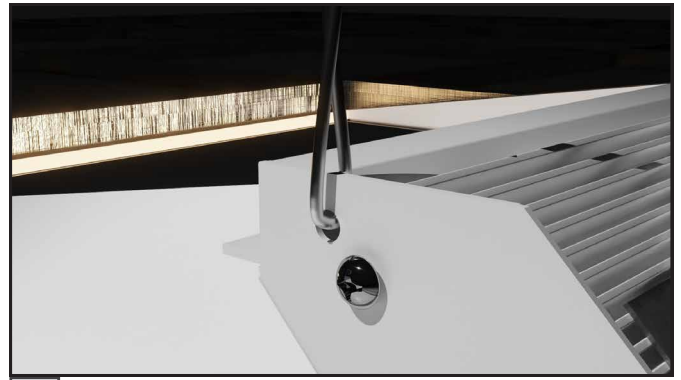
**3** Attach external power wires to Driver in Driver Housing.



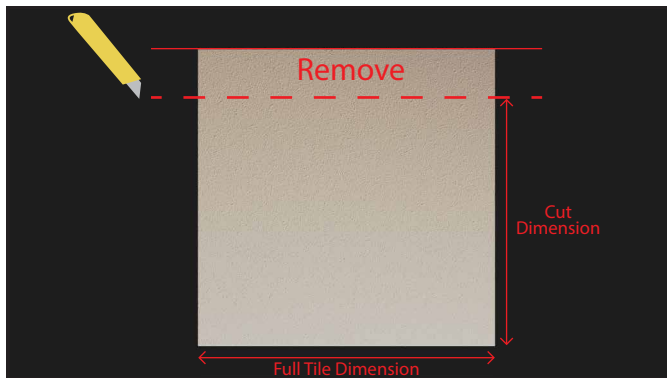
**4** Attach Driver housing cover plate to driver housing.



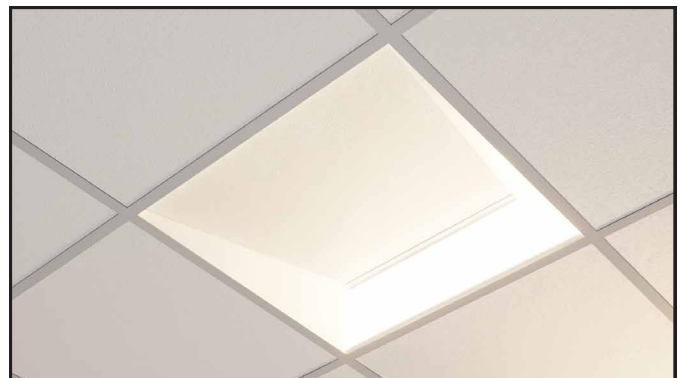
5 Install Seismic clips to left and right T Grid if needed.



6 Attach safety wire to Loft fixture and structure if needed.



7 Cut ceiling tile to (Tegular/Flat):  
a. 2x2 Single Light Engine Fixture: 20.00" x 23 3/4"  
b. 2x4 fixture: 20.00" x 47 3/4"  
c. 1x4 fixture: 8 1/4" x 47 3/4"  
d. 2x2 Dual Light Engine Fixture: 16" x 23 3/4"  
e. 2x4 Dual Light Engine Fixture: 16" x 47 3/4"



8 Place the ceiling tile on the top of the fixture to complete installation.