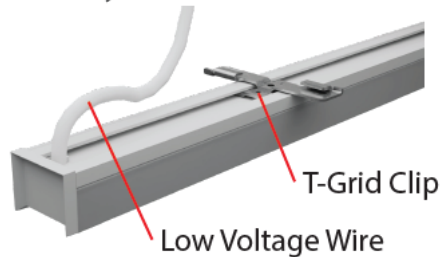


PLEASE READ ALL INSTRUCTIONS CAREFULLY BEFORE INSTALLING. RISK OF FIRE AND ELECTRICAL SHOCK. FIXTURE MUST BE INSTALLED BY A QUALIFIED ELECTRICIAN. ALL INSTALLS SHOULD BE IN ACCORDANCE WITH NATIONAL, LOCAL BUILDING AND ELECTRICAL CODES. ALL WIRES AND MATERIALS USED FOR INPUT/OUTPUT MUST BE UL APPROVED.

*For Continuous Run Fixtures and Shapes, Contact Factory Shop Drawings Will Be Provided

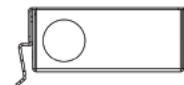
Provided Hardware:
Fixture
Driver Housing
Drywall Anchor
Drywall Attachment Plate
4-40 Allen Wrench



Fixture Dimensions		
Product	Length	Width
EZT	2FT, 4FT, 6FT, 8FT	1.2"



High Wattage Driver Box

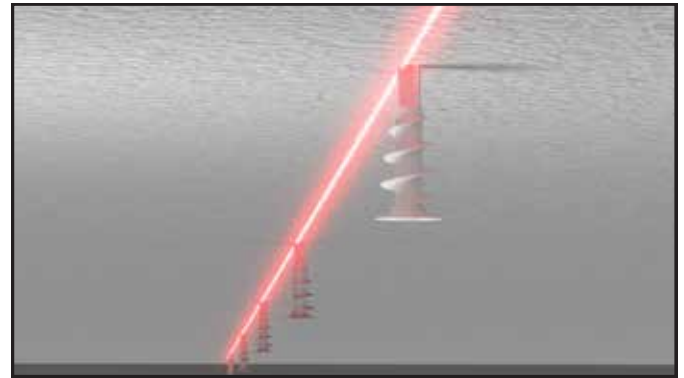


Low Wattage Driver Box

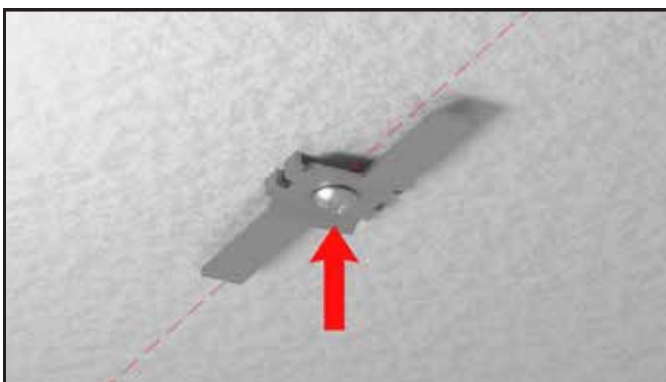
Fixture Installation Steps for Drywall:



- 1 Mark a straight line using a chalk line or laser where fixture will be installed



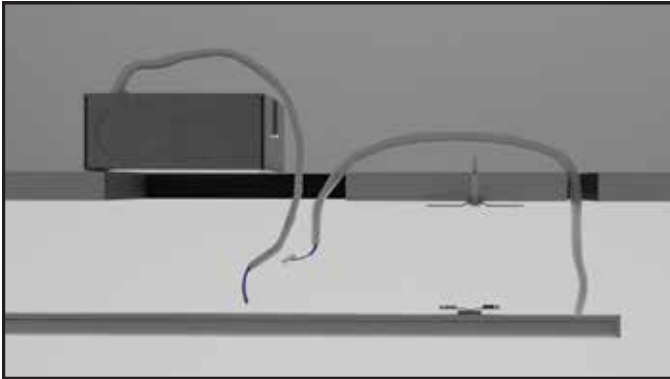
- 2 Install included Drywall Anchors on the line at the distances specified for that fixture length in the cut sheet/shop drawings.



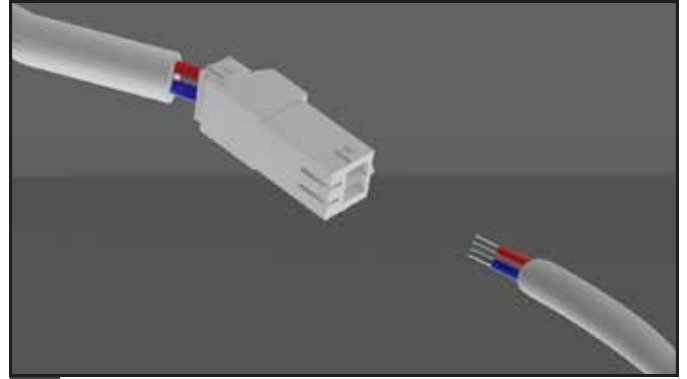
- 3 Orient the Drywall attachment plate to be inline with the fixture, then screw into Drywall Anchor. Teeth on Drywall plate must dig into the drywall.



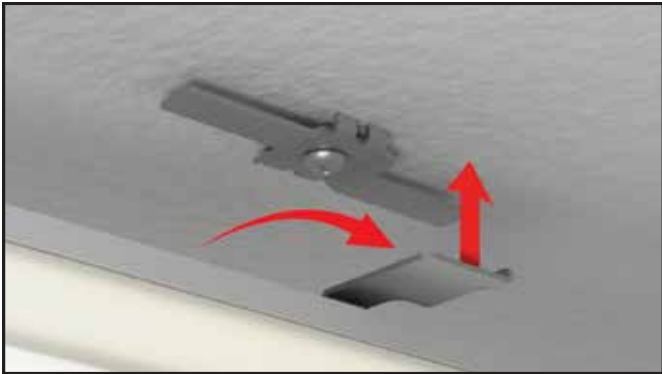
- 4 Cut 3.4/2" hole in ceiling where the end of the fixture with electrical connector will be. Connect driver box to power source and insert into ceiling. Leave low voltage wire accessible from room side.



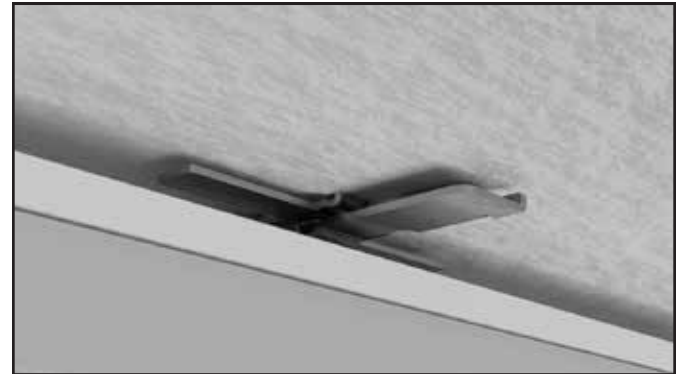
- 5 Insert wiring from fixture through the hole aligned with fixture. Pull end of wire from fixture through driver hole.



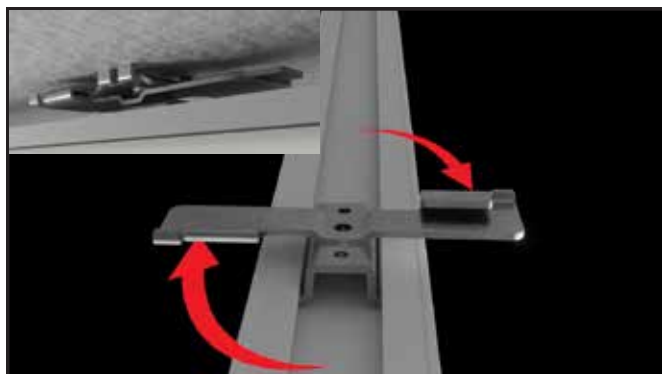
- 6 Connect red and blue wires from fixture into connector to align with red and blue wires from driver. Insert wires into ceiling.



- 7 To install fixture, ensure the T-Grid clips on the fixture are rotated 90 degrees to the open position so that arms are perpendicular to fixture.



- 8 Ensure that the T-Grid attachment plate and T-Grids clips are aligned with each other prior to attaching fixture.



- 9 Rotate clips until they are parallel with the fixture and fully engaged with T-Bar. Ensure both tabs are clipped onto the T-Grid attachment plate.



- 9 Turn power on to fixture to ensure it is connected properly, then close up driver box hole.