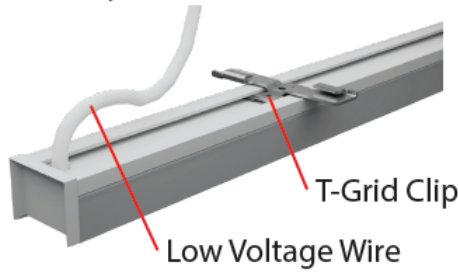


PLEASE READ ALL INSTRUCTIONS CAREFULLY BEFORE INSTALLING. RISK OF FIRE AND ELECTRICAL SHOCK. FIXTURE MUST BE INSTALLED BY A QUALIFIED ELECTRICIAN. ALL INSTALLS SHOULD BE IN ACCORDANCE WITH NATIONAL, LOCAL BUILDING AND ELECTRICAL CODES. ALL WIRES AND MATERIALS USED FOR INPUT/OUTPUT MUST BE UL APPROVED.

*For Continuous Run Fixtures and Shapes, Contact Factory Shop Drawings Will Be Provided

Provided Hardware:
Fixture
Driver Housing
Drywall Anchor
Drywall Attachment Plate
4-40 Allen Wrench



Fixture Dimensions		
Product	Length	Width
EZT	2FT, 4FT, 6FT, 8FT	1.2"



High Wattage Driver Box



Low Wattage Driver Box

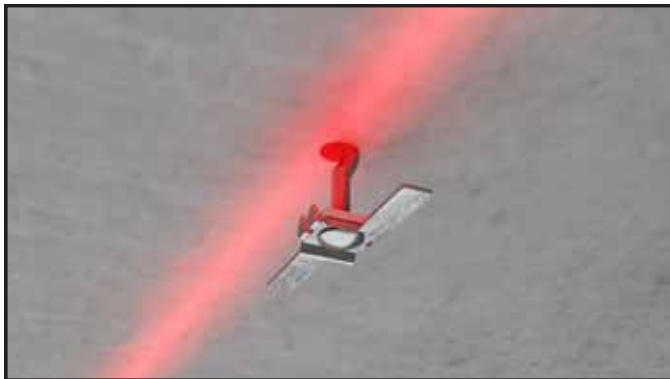
Fixture Installation Steps for Concrete:



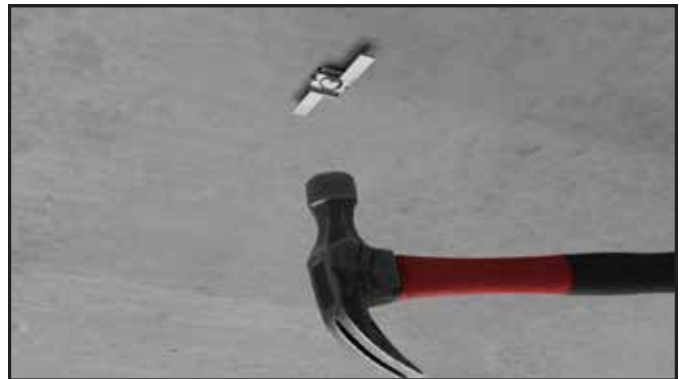
1 Scibe a line where the fixture will be place and make off hole locations according to shop drawing



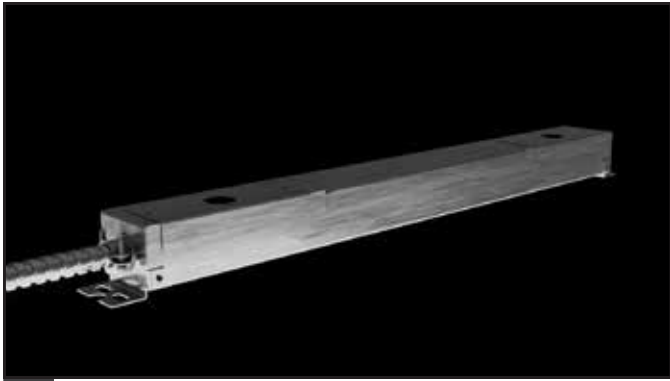
2 Drill holes using 3/16 drill bit at least 1 1/2" in line at the distances specified for that fixture length in the cut sheet/shop drawings.



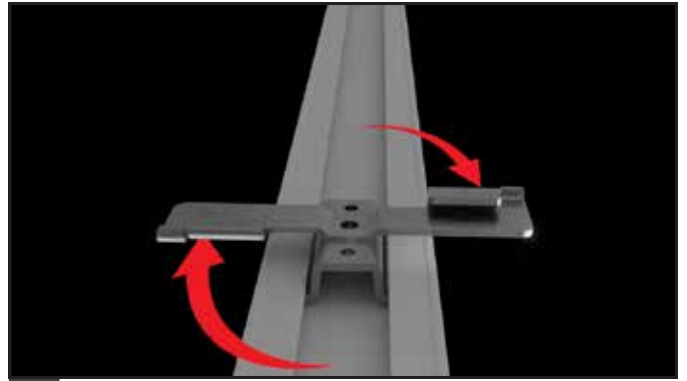
3 Place mounting brackets in hole and assure the tabs are inline with the fixture



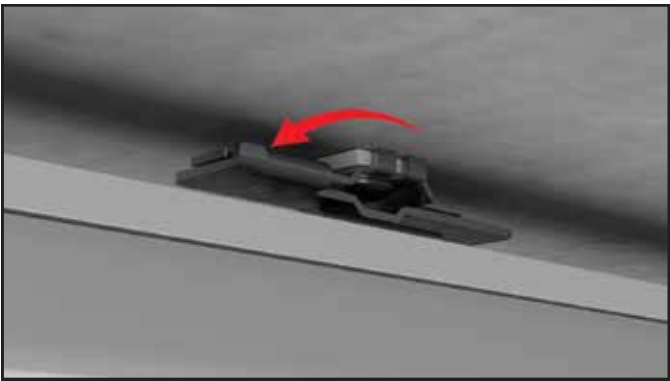
4 Hammer mounting brackets into hole until the bracket is flush up against the plastic spacer



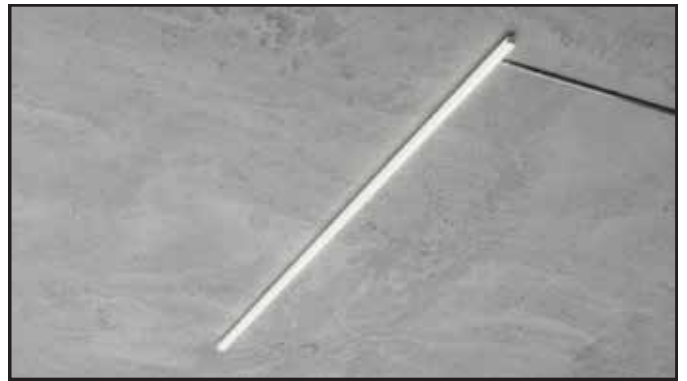
5 Route included driver to desired location and orient conduit towards fixture.



6 Rotate the clips on the fixture 90 degrees to the open position so that arms are perpendicular to fixture.



7 Push fixture up against mounting bracket and rotate clips until they are parallel with the fixture and fully engaged with mounting bracket. The tabs of clips should be grabbing the sides of the mounting bracket



8 Run conduit to edge of fixture and connect wires from driver to fixture. Mount conduit to ceiling and power on fixture.