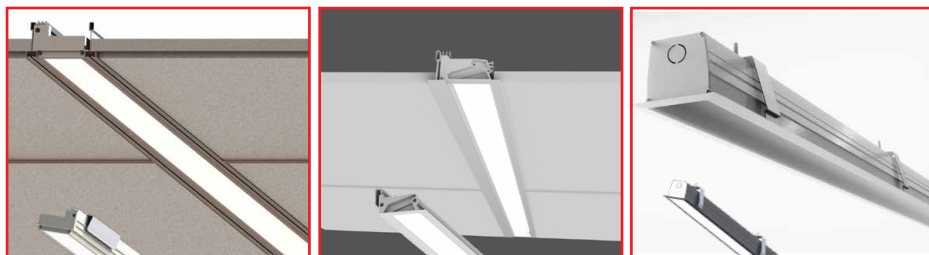


Edge 2"



Symmetric - Grid



Wall Wash - Grid



Symmetric - Gypsum



Project: _____

Type: _____

Notes: _____

EDGE, recessed luminaire. With a leading edge optical system and ultra shallow form factor, the Edge luminaire combines both form and function to deliver the perfect beam of light. No longer is plenum space a concern, with a max height of 3.8" and a minimum of 2.1" the Edge can be simply installed into any grid or drywall ceiling systems in varying lengths and patterns.

Ordering Guide

EDGET1		CEILING TYPE		MOUNTING OPTIONS		LENGTH		LUMENS/FT	
ARON ID		CEILING TYPE		MOUNTING OPTIONS		LENGTH		LUMENS/FT	
EDGET1	EDGE 2.0	FF	Flat 9/16" & 15/16" Tbars Flat Ceiling Panel	RTB	Recessed - TBar	2FA	2FT	300	300 lm/ft @ 2.9 W/FT
		FT15	Flat 15/16" Tbars Tegular Ceiling Panel	RDWT	Recessed - Drywall - Trim	3FA	3FT	400	400 lm/ft @ 4.3 W/FT
		FT9	Flat 9/16" Tbars Tegular Ceiling Panel			4FA	4FT	500	500 lm/ft @ 5.1 W/FT
		SS	Dimensional 9/16" Tbars			5FA	5FT	750	750 lm/ft @ 7.1 W/FT
		DW	Drywall	6FA	6FT	850	850 lm/ft @ 8.9 W/FT		
						7FA	7FT	1000	1000 lm/ft @ 9.7 W/FT
						8FA	8FT		
						X	2'x2', 4'x4', 2'x4'...		
						C	Continuous Run: *1ft Increments ** Contact Factory for Lengths to the Inch		
						*For Corners or U Shapes, Specify L for Corner, U for U shapes		*Consult Factory for Other Lumen Packages *Wattage Calculated w/ CCT of 35K8	

BEAM		COLOR / CRI		UNV		DRIVER		ACCESSORIES/RATINGS		FINISH	
B1	Symmetric	30K8	3000K - 80CRI	UNV	120-277V	DM	Factory 0-10V, Dim 1%	E5W	5W EM Battery	W	White
B2	Asymmetric	30K9	3000K - 90CRI	347	347 V	BT	Bluetooth	E10W	10W EM Battery	BLK	Black
WW	Wall Wash *WW Available in any length In-Grid -or- 8FT Max Length in Drywall with Flange Kit.	35K8	3500K - 80CRI	POE	Low Voltage PoE	DALI	Dali System	CCEA	Chicago Plenum Rated	C	Custom
		35K9	3500K - 90CRI			ELD	EldoLED 1% Dimming	AWNR	Athena Wireless Node RF Only		
		40K8	4000K - 80CRI			LD2	Lutron DALI-2	AWNS	Athena Wireless Node with Sensors		
		40K9	4000K - 90CRI			LDE1	Lutron EcoSystem (1% Dimming)				
		TW	Tunable White 2700-5000K			PEQ0	Lutron EcoSystem (0.1% Dimming)				
						**See Page 5 for Bluetooth Information. Consult Factory					

**contact factory for other driver, dimming and control options

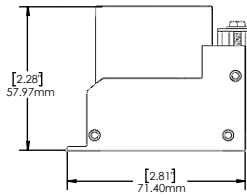
Edge 2"



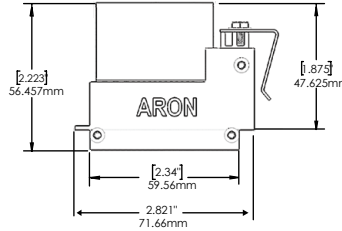
Dimensions

Recessed Grid Mounting

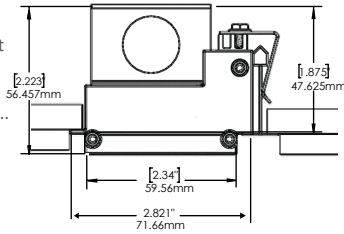
Ceiling Type: 15/16 & 9/16 Flat TBar w/ Flat Tile
Beam: B1 or B2
PN: EDGET1-FF-RTB....



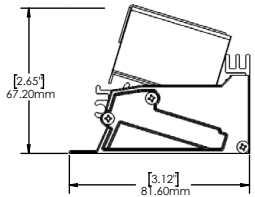
Ceiling Type: 9/16 Dimensional TBar
Beam: B1 or B2
PN: EDGET1-SS-RTB....



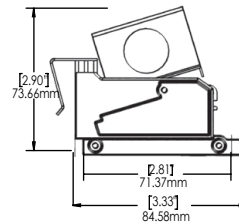
Ceiling Type: 9/16 Flat TBar w/ Tegular Tile
Beam: B1 or B2
PN: EDGET1-FT9-RTB...



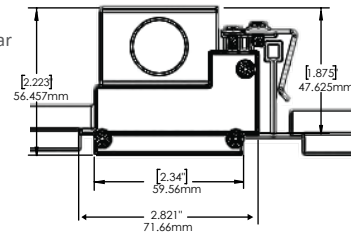
Ceiling Type: 15/16 & 9/16 Flat TBar w/ Flat or Tegular Tile
Beam: WW
PN: EDGET1-FF-RTB....-WW-



Ceiling Type: 9/16 Dimensional TBar
Beam: WW
PN: EDGET1-SS-RTB....-WW-

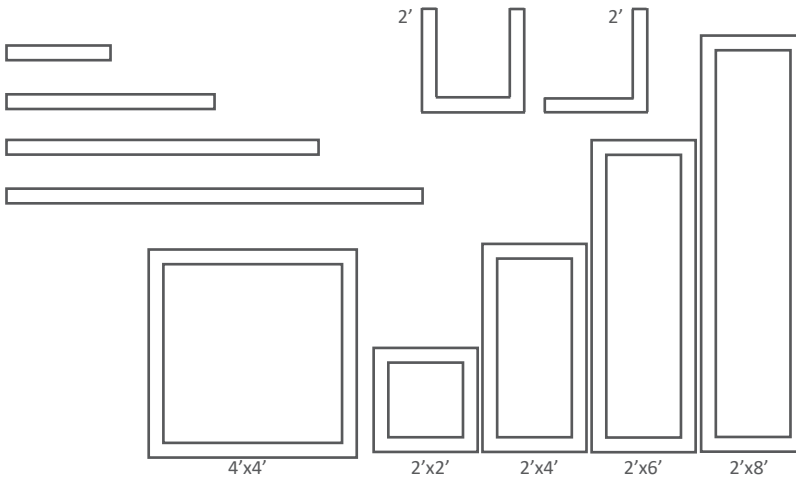


Ceiling Type: 15/16 Flat TBar w/ Tegular Tile
Beam: B1 or B2
PN: EDGET1-FT15-RTB...



Application Sizes **Contact Factory For Multi-Directional Shapes (Available in Drywall)

- 2FA (23.75" Grid 25.5" DW)
- 4FA (47.75" Grid 49.5" DW)
- 6FA (71.75" Grid 73.5" DW)
- 8FA (95.75" Grid 97.5" DW)



Weight Grid

2FA = 4 lbs
4FA = 7 lbs
6FA = 11 lbs
8FA = 14 lbs
2x2 = 14 lbs
2x4 = 20 lbs

Weight Drywall

2FA = 3 lbs
4FA = 5.5 lbs
6FA = 8 lbs
8FA = 11 lbs
2x2 = 12 lbs
2x4 = 18 lbs

Construction

EDGE Grid

- Housing: Extruded aluminum
- End Cap: Injection molded ABS
- Paint: Powder Coated
- Sheet Metal: Galvanized 18 gauge

EDGE Drywall

- Housing: Extruded aluminum
- End Cap Trim: Die Cast Aluminum
- Paint: Powder Coated
- Sheet Metal: Galvanized 18 gauge
- Mounting Bracketry: Annealed Spring Steel

Optical

- Symmetric and Asymmetric
- Edge-Lit Optical System consisting of:
 - 1) Matte White Reflector
 - 2) Cast acrylic light guide
 - 3) Extruded volumetric diffuser
- Minimum 80 or 90 CRI
- 3000K, 3500K, 4000K
- ≤ 3 SDCM

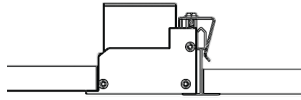


Edge 2"

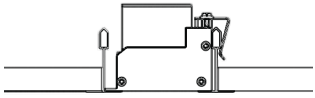
Mounting Options/Ceiling Type

15/16 T-Bar

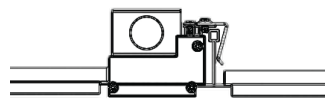
Flat Tile - Flange



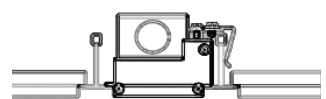
Flat Tile - Boxed In



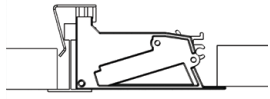
Tegular Tile - Flange



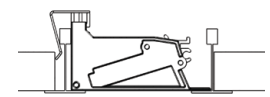
Tegular Tile - Boxed In



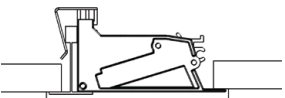
WW - Flat Tile - Flange



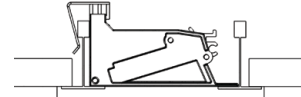
WW - Flat Tile - Boxed In



WW - Tegular Tile - Flange

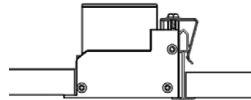


WW - Tegular Tile - Boxed In

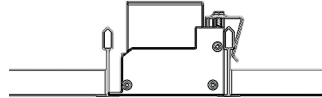


9/16 T-Bar

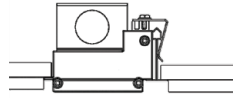
Flat Tile - Flange



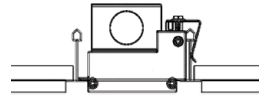
Flat Tile - Boxed In



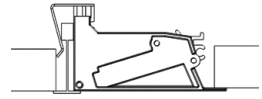
Tegular Tile - Flange



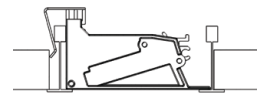
Tegular Tile - Boxed In



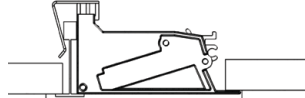
WW - Flat Tile - Flange



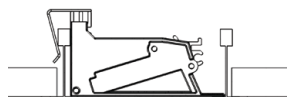
WW - Flat Tile - Boxed In



WW - Tegular Tile - Flange

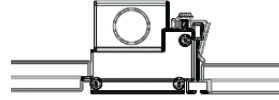


WW - Tegular Tile - Boxed In

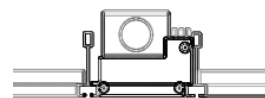


Screw Slot T-Bar

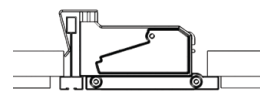
Tegular Tile - Flange



Tegular Tile - Boxed In

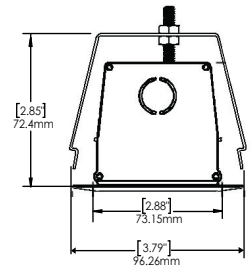
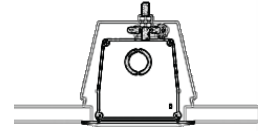


WW - Tegular Tile - Flange



Drywall

Trim



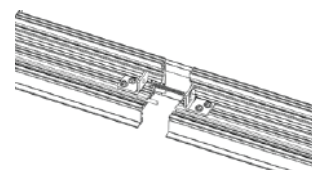
Ceiling Type: Gyp - Trim
Beam: B1 or B2
PN: EDGET1-DW-RDWT...

Electrical

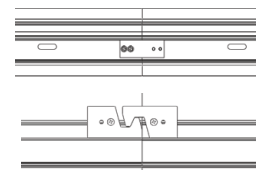
- Integral high efficiency driver w/ universal 120-277 input
- 0-10V dimming (1%) standard
- Class 2
- Optional Integral battery pack
- Tunable White Drivers
- L90: 90,000 Hours
- L70: 185,000 Hours
- Various Control and Driver Options
- *Contact factory

Mechanical Joining

GRID - Guide Pin Alignment and Simple Pull

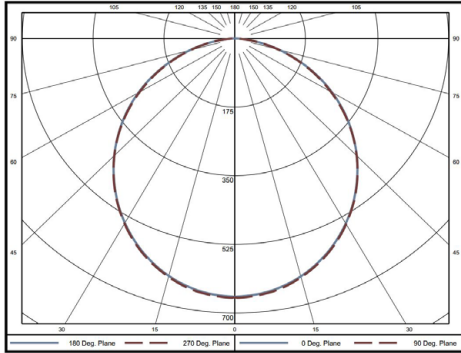


Drywall - Align and Lock Features



Model Tested: EdgeT1-FF-RTB-4FA-450-B1-35K8-UNV-DM-W

Photometric Curve



Candela Distribution

Vertical Angle	Horizontal Angles				
	0	22.5	45	67.5	90
0	659	659	659	659	659
5	654	656	654	654	657
15	627	629	627	627	630
25	577	579	577	577	580
35	508	508	507	506	509
45	424	422	423	421	423
55	329	326	326	324	326
65	223	222	220	218	219
75	115	115	114	113	113
85	26	26	26	26	26
90	5	4	4	4	4

Zonal Lumens

Zone	Lumens
0-10	62
10-20	177
20-30	266
30-40	318
40-50	326
50-60	291
60-70	218
70-80	121
80-90	32

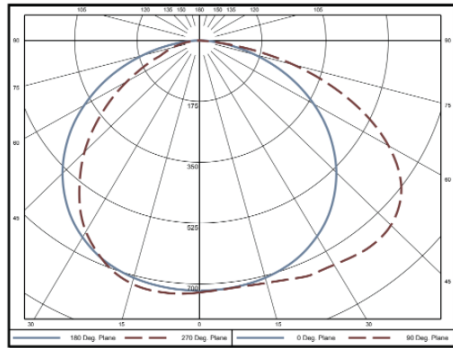
Luminance Data (cd/m²)

Vertical Angle	Horizontal Angles		
	0	45	90
45	9691	9665	9678
55	9261	9177	9183
65	8536	8412	8395
75	7216	7135	7075
85	4868	4947	4819

Length: 4ft
 Lumens/ft: 453
 Total Lumens: 1812
 Input Watts: 17.1 W
 Efficacy: 105.7 lm/W

Model Tested: EdgeT1-FF-RTB-4FA-500-WW-35K8-UNV-DM-W

Photometric Curve



Candela Distribution

Vertical Angle	Horizontal Angles				
	0	22.5	45	67.5	90
0	724.2	724.2	724.2	724.2	724.2
5	717.8	725.4	719	719.7	718.9
15	706.4	716.6	713.6	719.9	721.4
25	677.5	700	713.6	736.1	742
35	622.7	667.6	700.3	735.5	753.8
45	540.6	605.3	647.7	718.2	750.8
55	433.1	498	556.4	640.7	678.7
65	304.4	355.3	410.7	480.7	511.1
75	164	197.7	227.5	259	272
85	40.2	45.8	36.9	22.5	16.3
90	0.9	0.8	0.7	0.7	0.7

Zonal Lumens

Zone	Lumens
0-10	69.00
10-20	202.80
20-30	320.60
30-40	404.90
40-50	439.10
50-60	408.60
60-70	310.30
70-80	171.80
80-90	37.30

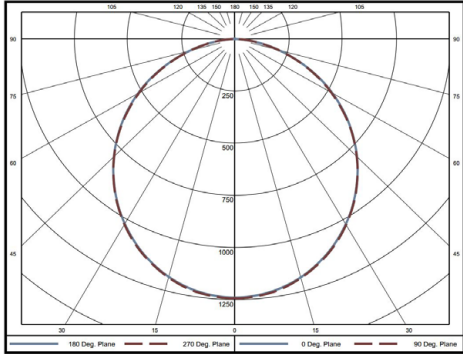
Luminance Data (cd/m²)

Vertical Angle	Horizontal Angles		
	0	45	90
45	11210	13430	15560
55	11070	14220	17340
65	10560	14240	17730
75	9285	12880	15400
85	6757	6207	2742

Length: 4ft
 Lumens/ft: 592
 Total Lumens: 2365
 Input Watts: 32.5 W
 Efficacy: 105.1 lm/W
 L90: 90,000 Hours
 L70: 185,000 Hours

Model Tested: EdgeT1-FF-RTB-4FA-850-B1-35K8-UNV-DM-W

Photometric Curve



Candela Distribution

Vertical Angle	Horizontal Angles				
	0	22.5	45	67.5	90
0	1241	1241	1241	1241	1241
5	1233	1237	1233	1233	1237
15	1183	1186	1181	1182	1186
25	1089	1091	1087	1087	1093
35	959	958	957	955	961
45	801	798	799	795	800
55	622	618	616	613	616
65	423	421	417	415	417
75	217	218	216	215	215
85	47	51	51	51	51
90	2	7	8	8	8

Zonal Lumens

Zone	Lumens
0-10	117
10-20	334
20-30	501
30-40	599
40-50	615
50-60	551
60-70	413
70-80	229
80-90	60

Luminance Data (cd/m²)

Vertical Angle	Horizontal Angles		
	0	45	90
45	18290	18230	18260
55	17500	17330	17350
65	16150	15920	15910
75	13530	13490	13420
85	8639	9515	9396

Length: 4ft
 Lumens/ft: 855
 Total Lumens: 3420
 Input Watts: 32.5 W
 Efficacy: 105.1 lm/W

Bluetooth Technology



With our BubblyNet OEM partnership, realize the power of bluetooth lighting control! Offering wall controllers, integrated fixture sensors, tunable white/ rgbw control. Contact Factory for More Information



PoE Technology



Our Partnerships with Igor and NuLEDs offer PoE Integration using low voltage cat 5, cat 6 cabling. Contact Factory for more Information.