

EDGE Air

Installation for EDGE Air

PLEASE READ ALL INSTRUCTIONS CAREFULLY BEFORE INSTALLING. RISK OF FIRE AND ELECTRICAL SHOCK. FIXTURE MUST BE INSTALLED BY A QUALIFIED ELECTRICIAN. ALL INSTALLS SHOULD BE IN ACCORDANCE WITH NATIONAL, LOCAL BUILDING AND ELECTRICAL CODES. ALL WIRES AND MATERIALS USED FOR INPUT/OUTPUT MUST BE UL APPROVED.

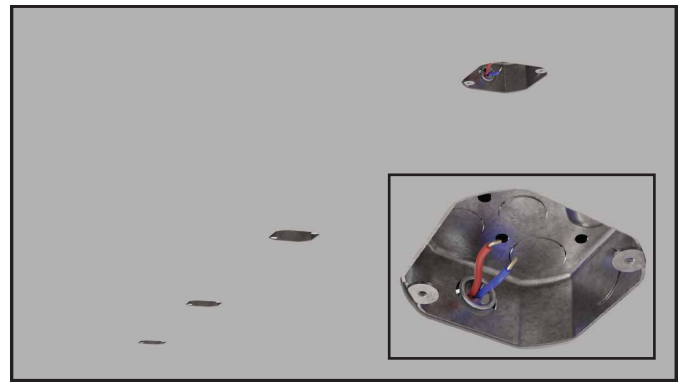
Fixture Dimensions

Product	Length	Width
EDGE Air	2FT, 4FT, 6FT, 8FT	2.77"

Installation of Suspension Points in Drywall:



- 1 Mount remote driver using provided mounting provisions on driver box.



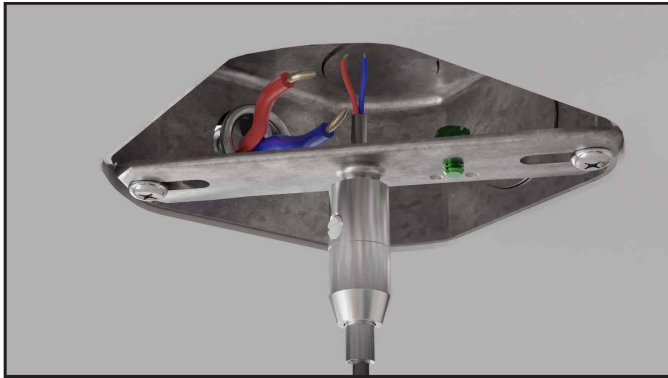
- 2 Install J-Boxes for suspension points at locations provided on shop drawings.



- 3 Install bracket bar for suspension point. Screw cable gripper into bracket bar.



- 4 Thread the suspension cable through the canopy retainer ring and canopy.



5 Push cable through gripper and lock in-place with the nylon flat head set screw. Make electrical connections



6 Raise canopy and canopy retainer ring up to the ceiling and fasten the canopy by threading in the retainer ring.

Installation of Suspension Points in Open Ceiling:



1 Use alignment star hole at the bottom of the driver to help center the suspension point over its designated location.



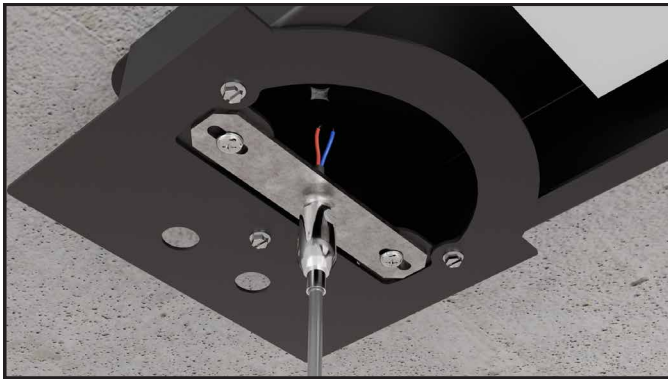
2 Install canopy driver box at location needed for suspension point.



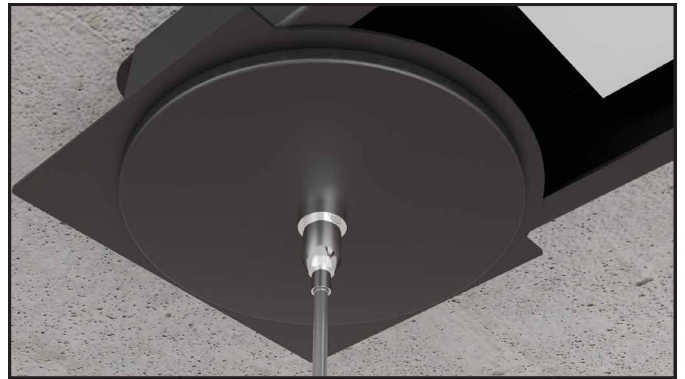
3 Install the J-box bracket bar onto the driver box.



4 Thread the suspension cable through the canopy retainer ring and canopy.



5 Install cable gripper and suspension cable into bracket bar and make necessary electrical connections. Adjust cable height as needed by feeding access wire into driver cavity.



6 Raise canopy and canopy retainer ring up to the ceiling and fasten the canopy by threading in the retainer ring.



7 Reinstall driver access door onto driver.

Installation of Single Fixture:



1 Adjust suspension cable height at the ceiling gripper by depressing the nipple.

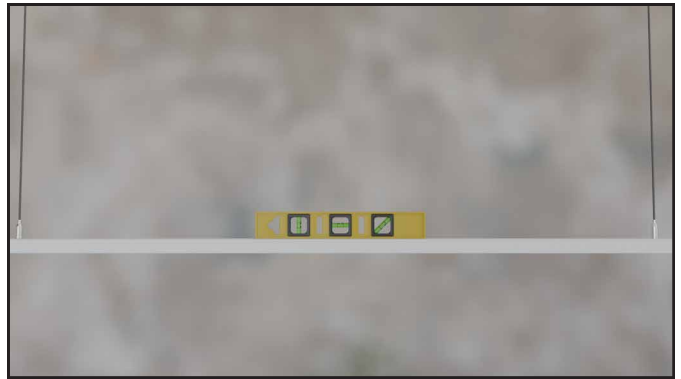


2 Once fixture is level, lock the cable in place using the flat head nylon set screw. Do not over tighten.

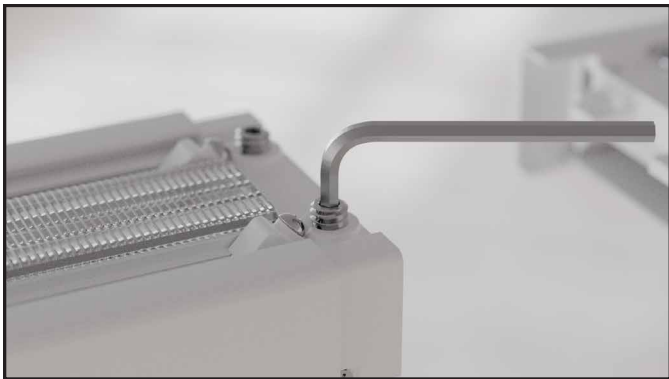
Installation of Continuous Run:



- 1 Install suspension points along the run length in accordance with shop drawings.



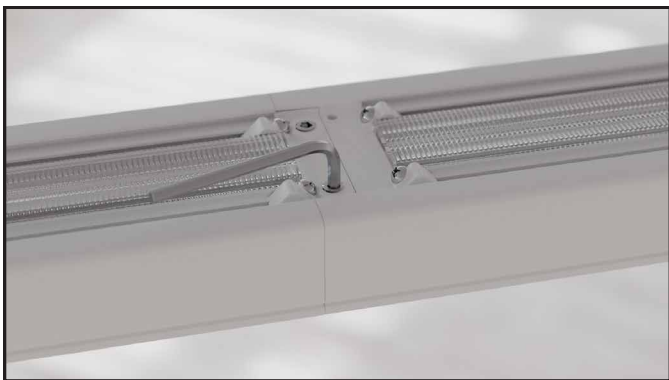
- 2 Hang all fixtures to their appropriate locations and orientations using previous steps. Ensure fixture height consistency and level.



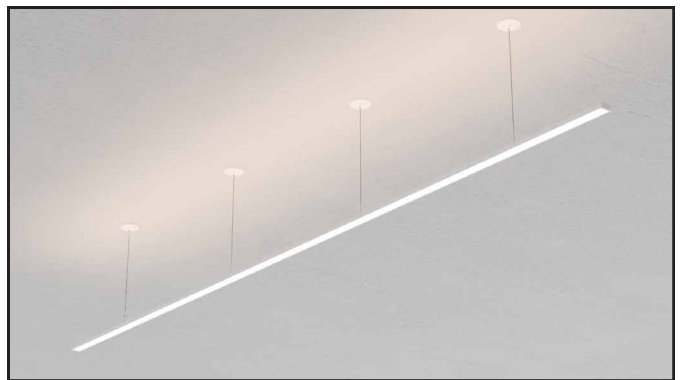
- 3 Once all fixtures are hung, loosen the two 1/4-20 set screws on the male joiner using a 1/8" allen key but do not remove entirely.



- 4 Connect the two mating fixtures by sliding them into each other
All sections must be hung and leveled before connecting. Do not connect before suspending. Doing so will compromise joining features



- 5 Once full mated, tighten the two 1/4-20 set screws to lock the joiners together.



- 6 Power on fixture.
Diffusion lens can be slid towards the center of the run to close any gaps between diffuser sections.